

**RH1288 V3&RH2288 V3&RH2288H V3 Server
V100R003**

Upgrade Guide

Issue	02
Date	2014-12-25

Copyright © Huawei Technologies Co., Ltd. 2014. All rights reserved.

No part of this document may be reproduced or transmitted in any form or by any means without prior written consent of Huawei Technologies Co., Ltd.

Trademarks and Permissions



and other Huawei trademarks are trademarks of Huawei Technologies Co., Ltd.

All other trademarks and trade names mentioned in this document are the property of their respective holders.

Notice

The purchased products, services and features are stipulated by the contract made between Huawei and the customer. All or part of the products, services and features described in this document may not be within the purchase scope or the usage scope. Unless otherwise specified in the contract, all statements, information, and recommendations in this document are provided "AS IS" without warranties, guarantees or representations of any kind, either express or implied.

The information in this document is subject to change without notice. Every effort has been made in the preparation of this document to ensure accuracy of the contents, but all statements, information, and recommendations in this document do not constitute a warranty of any kind, express or implied.

Huawei Technologies Co., Ltd.

Address: Huawei Industrial Base
Bantian, Longgang
Shenzhen 518129
People's Republic of China

Website: <http://enterprise.huawei.com>

About This Document

Purpose

This document describes how to upgrade the iBMC (Intelligent Baseboard Management Controller), BIOS (basic input/output system), and LCD (liquid crystal display) and verify upgrade results.






Intended Audience

This document is intended for:

- Technical support engineers
- Maintenance engineers

Symbol Conventions

The symbols that may be found in this document are defined as follows.

Symbol	Description
 DANGER	Indicates an imminently hazardous situation which, if not avoided, will result in death or serious injury.
 WARNING	Indicates a potentially hazardous situation which, if not avoided, could result in death or serious injury.
 NOTICE	Indicates a potentially hazardous situation which, if not avoided, may result in minor or moderate injury.
 CAUTION	Indicates a potentially hazardous situation which, if not avoided, could result in equipment damage, data loss, performance deterioration, or unanticipated results. NOTICE is used to address practices not related to personal injury.
 NOTE	Calls attention to important information, best practices and tips. NOTE is used to address information not related to

Symbol	Description
	personal injury, equipment damage, and environment deterioration.

Change History

Changes between document issues are cumulative. The latest document issue contains all the changes made in earlier issues.

Issue 02 (2014-12-24)

This issue is the second official release.

Change the name of the document.

Issue 01 (2014-09-04)

This issue is the first official release.

Contents

About This Document.....	ii
1 Before You Start.....	1
1.1 Impact of the Upgrade	1
1.2 Precautions.....	2
1.3 Version Requirements	2
1.4 Upgrade Process	2
2 Upgrade Process	5
3 Preparing for the Upgrade.....	7
3.1 Pre-upgrade Checklist.....	7
3.2 Obtaining the Upgrade Package and Documents.....	7
3.3 Verifying the Upgrade Package Integrity	8
4 Upgrading the iBMC	9
4.1 Performing the Upgrade.....	9
4.2 Verifying the Upgrade.....	11
5 Upgrading the BIOS	12
5.1 Performing the Upgrade.....	12
5.2 Verifying the Upgrade.....	15
6 Upgrading the LCD	16
6.1 Performing the Upgrade.....	16
6.2 Verifying the Upgrade.....	18
A Appendix	19
A.1 Querying the IP Address of the iBMC Management Network Port	19
A.2 Logging In to the iBMC GUI.....	22
A.3 Check Server Software Versions	25
A.4 Checking Server Alarms	27
A.5 Technical Support	28

1 Before You Start

About This Chapter

- 1.1 Impact of the Upgrade
- 1.2 Precautions
- 1.3 Version Requirements
- 1.4 Upgrade Process

1.1 Impact of the Upgrade

Before you upgrade an earlier version to a new version, read this section carefully to learn about the possible impact on the system. [Table 1-1](#) describes the impact of the upgrade on the system.

Table 1-1 Impact of the upgrade

No.	Item	Impact	Impact Description
1	iBMC	Impact on services	None
		Impact on operation and maintenance (O&M)	No other operation is allowed during the upgrade. You should restart the iBMC immediately or later after the upgrade. Services are interrupted during the restart.
2	BIOS	Impact on services	The server must be restarted after the upgrade, and services are interrupted.
		Impact on the operating system (OS)	When you use the iBMC to upgrade the BIOS, the OS is not affected.
		Impact on O&M	None NOTE The server must not be restarted during the upgrade.

No.	Item	Impact	Impact Description
3	LCD	Impact on services	None
		Impact on the operating system (OS)	When you use the iBMC to upgrade the LCD, the OS is not affected.
		Impact on O&M	None

1.2 Precautions

[Table 1-2](#) describes the precautions for upgrading the server.

Table 1-2 Precautions for upgrading the server

No.	Description
1	Read this document before upgrading the server. For any problems or suggestions pertaining to this document, contact Huawei technical support .
2	Perform the upgrade during off-peak hours to minimize the impact on the system and services.
3	<p>Time required for a software upgrade:</p> <ul style="list-style-type: none">iBMC: 20 minutes <p>NOTE</p> <p>The active and standby images of the iBMC must be upgraded separately. Therefore, you must upgrade the iBMC twice, and each upgrade takes about 5 to 10 minutes. For details, see Upgrading the iBMC.</p> <ul style="list-style-type: none">BIOS: 10 minutesLCD: 10 minutes

1.3 Version Requirements

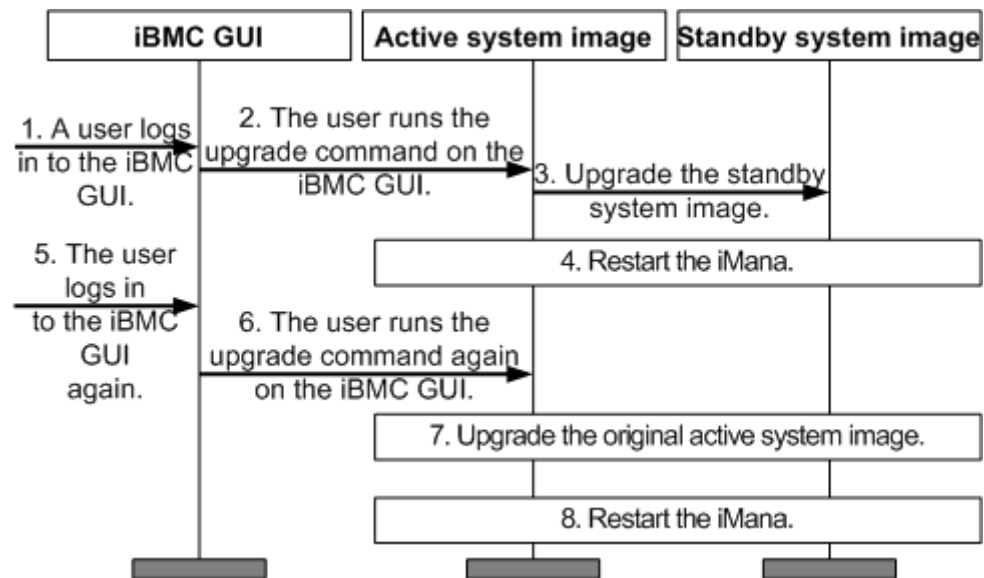
The upgrade has no version requirement.

1.4 Upgrade Process

iBMC Upgrade Process

[Figure 1-1](#) shows the iBMC upgrade process.

Figure 1-1 iBMC Upgrade process



The following describes the upgrade process:

1. A user logs in to the iBMC GUI.
2. A user runs the upgrade command on the iBMC GUI.
3. Upgrade the standby iBMC system image.



NOTE

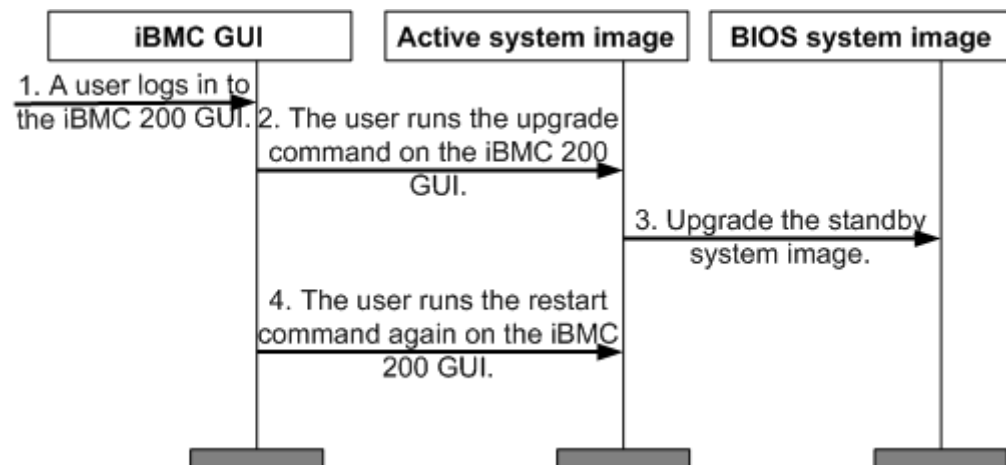
The iBMC that the user has accessed is the active system image.

4. The iBMC system restarts. The current login user is logged out after the system restarts, and the image file is automatically switched to the upgraded standby system image.
5. A user logs in to the iBMC GUI again.
6. A user runs the upgrade command again on the iBMC GUI.
7. Upgrade the original active iBMC system image.
8. The iBMC system restarts.

BIOS Upgrade Process

Figure 1-2 shows the BIOS upgrade process.

Figure 1-2 BIOS Upgrade process



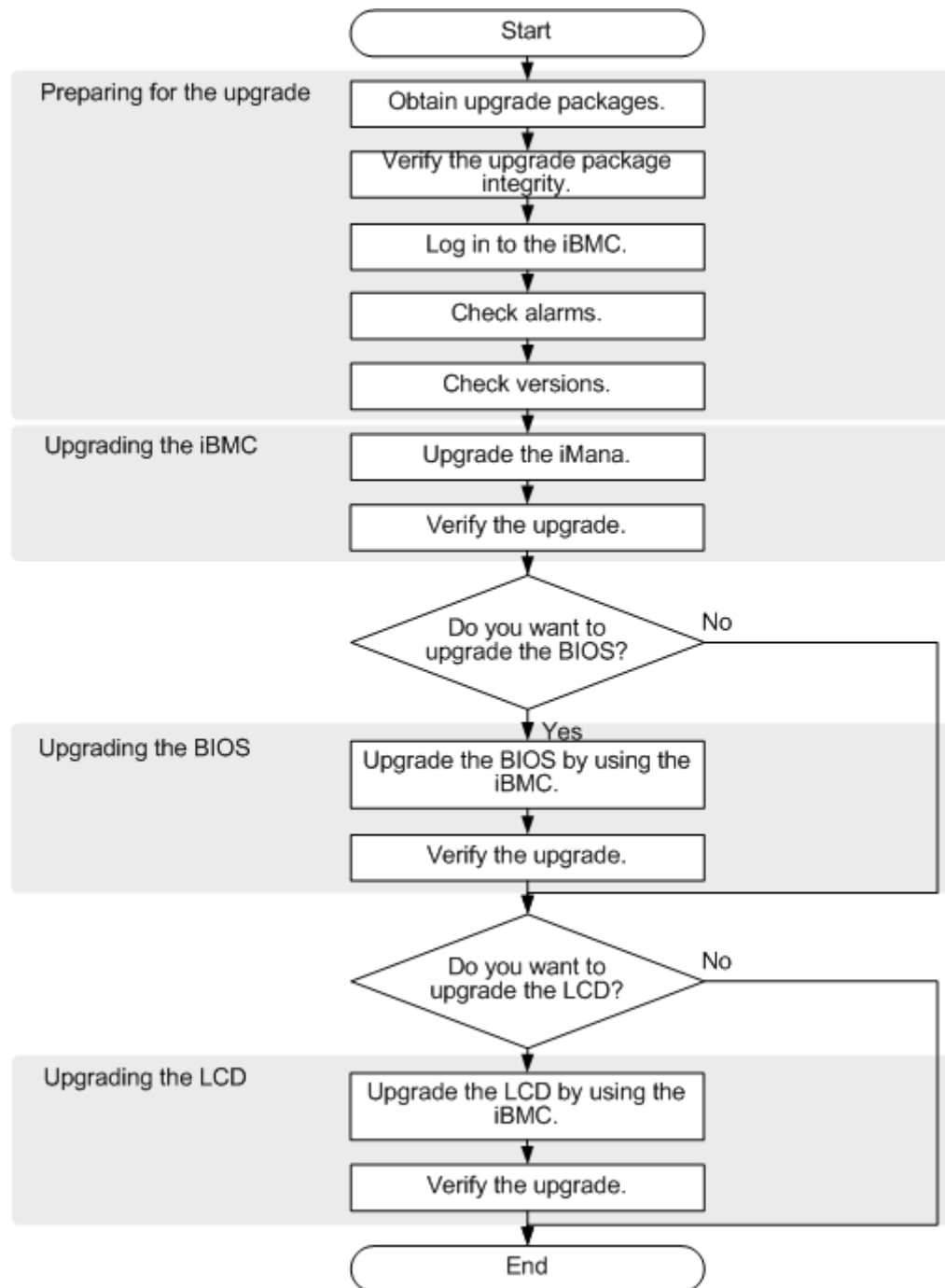
The following describes the upgrade process:

- A user logs in to the iBMC GUI.
- A user runs the upgrade command on the iBMC GUI.
- Upgrade the BIOS system image.
- A user runs the restart command on the iBMC GUI.
- The iBMC system restarts.

2 Upgrade Process

[Figure 2-1](#) shows the process for upgrading the Server.

Figure 2-1 Server Upgrade process



3

Preparing for the Upgrade

About This Chapter

- [3.1 Pre-upgrade Checklist](#)
- [3.2 Obtaining the Upgrade Package and Documents](#)
- [3.3 Verifying the Upgrade Package Integrity](#)

3.1 Pre-upgrade Checklist

[Table 3-1](#) lists the items to be checked before the upgrade.

Table 3-1 Pre-upgrade checklist

No.	Item	Expected Result
1	System software version	<ol style="list-style-type: none">1. View and record the current iBMC, BIOS, and LCD versions. For details, see Check Server Software Versions.2. The source versions are earlier than target versions.
2	System operating status	<p>Check iBMC System operating status:</p> <ul style="list-style-type: none">• If no minor alarm, major alarm, or critical alarm is generated, continue the upgrade process. For details, see Checking Server Alarms.• If an alarm is generated, contact Huawei technical support.

3.2 Obtaining the Upgrade Package and Documents

Obtaining the Upgrade Package

Obtain upgrade packages at <http://enterprise.huawei.com>.

The download path is **SUPPORT > Product Support > IT > Server > Rack Server**.

Download and decompress the upgrade packages to a local PC. Table 3-2 lists the upgrade packages to be obtained.

Table 3-2 Upgrade packages to be obtained

Upgrade Package	Function	Required File after Decompression
iBMC	iBMC upgrade package	image.hpm
BIOS	BIOS upgrade package	biosimage.hpm
LCD	LCD upgrade package	lcdimage.hpm

Obtaining Documents

Download the documents required for the upgrades from <http://enterprise.huawei.com>.



The download path is **SUPPORT > Product Support > IT > Server > Rack Server**.

Documents to be obtained are as follows:

- *Release Notes*
- *Upgrade Guide*
- *Version Compatibility Table*

3.3 Verifying the Upgrade Package Integrity

Verify that the obtained upgrade package is consistent with the original one at the website <http://support.huawei.com/enterprise>.

Click  and  , load the digital certificate and software package respectively.

For details about the verification tool and method, visit the following link:

[Software digital signature \(OpenPGP\) validation tool](#)

4 Upgrading the iBMC

About This Chapter

[4.1 Performing the Upgrade](#)

[4.2 Verifying the Upgrade](#)

4.1 Performing the Upgrade

Scenarios

Upgrade the iBMC.



NOTE

- The iBMC upgrade does not change the user name and password of the iBMC.
- The active and standby iBMC images must be upgraded separately.
- The standby iBMC image is upgraded first. After the standby iBMC image is upgraded, and the server restarts, the original active iBMC image is upgraded.

Impact on the System

Upgrading the iBMC will cause the iBMC system to restart for twice. Upgrade the iBMC in the off-peak service time.

Prerequisites

Conditions

- You have logged in to the iBMC GUI. For details, see [Logging In to the iBMC GUI](#).
- No minor alarm, major alarm, or critical alarm is generated on the iBMC.

Data

Data preparation is not required for this operation.

Software

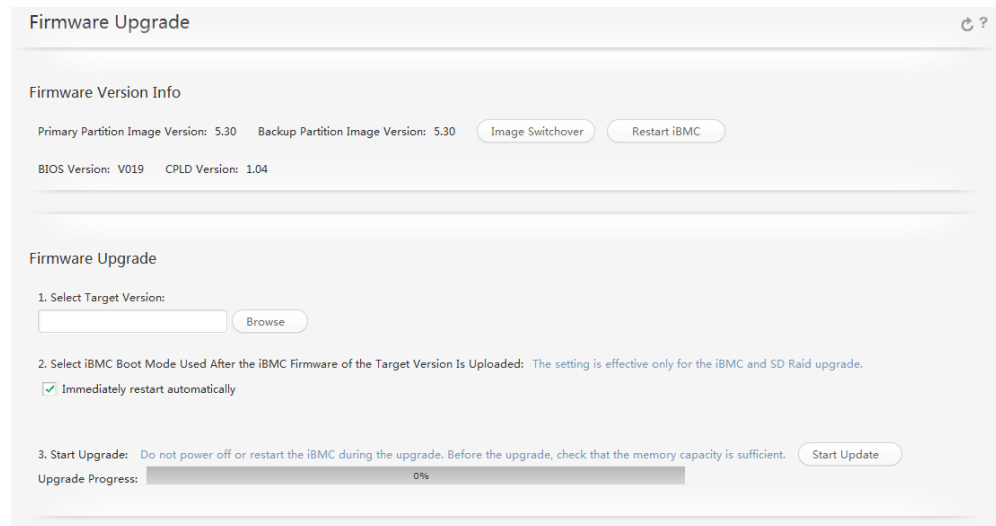
You have obtained **image.hpm**. For details, see [Obtaining the Upgrade Package and Documents](#).

Procedure

Upgrade the standby iBMC image.

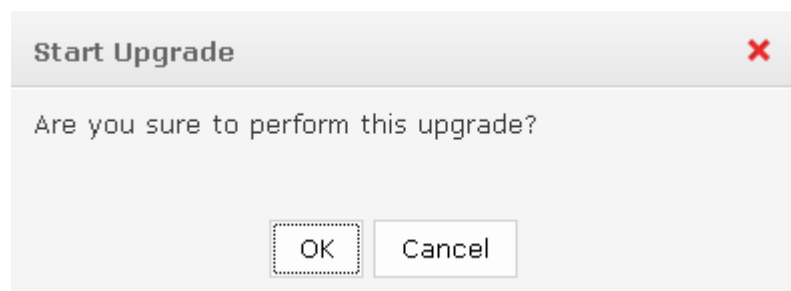
1. In the top navigation tree, choose **System**.
2. In the left navigation tree, choose **Firmware Upgrade**, as shown in [Figure 4-1](#).

Figure 4-1 Firmware Upgrade page

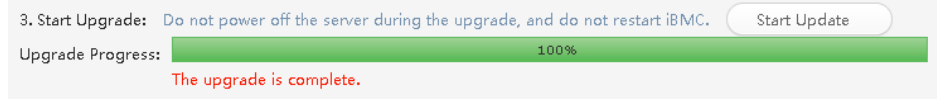


3. In the **Firmware Upgrade** area, click **Browse**.
The **Browse** window is displayed.
4. Select **image.hpm** from a local folder.
5. Click **Open**.
The upgrade package is selected, and the **Firmware Upgrade** page is displayed.
6. Choose **Restart Immediately**.
7. Click **Upgrade**.

The following information is displayed in the dialog box:



8. Click **OK**.
The iBMC then starts the upgrade.
To upgrade the standby iBMC image takes about 5 to 10 minutes.
After the upgrade is complete, the following information is displayed on the **Firmware Upgrade** page:



NOTE

After the upgrade is complete, the iBMC automatically restarts.

Upgrade the original active iBMC image.

9. Log in to the iBMC GUI again.
For details, see [Logging In to the iBMC GUI](#).
10. Repeat steps from [Step 1](#) to [Step 8](#) to upgrade the original active iBMC image.

----End

4.2 Verifying the Upgrade

Verification Checklist

[Table 4-1](#) describes the iBMC upgrade verification checklist.

Table 4-1 Verification checklist

No.	Item	Expected Result
1	Logging in to the iBMC GUI	You can log in to the iBMC GUI using the Internet Explorer.
2	iBMC version	The iBMC is of the target version.

Verification Procedure and Troubleshooting

Procedure

1. Log in to the iBMC GUI again.
For details, see [Logging In to the iBMC GUI](#).
2. Check the iBMC version.
For details, see [Check Server Software Versions](#).
Check that the upgraded iBMC is of the target version.

Troubleshooting

If you fail to log in to the iBMC GUI after the upgrade, contact [Huawei technical support](#).

If the iBMC is not of the target version or a failure message is displayed, upgrade the iBMC again. If the iBMC still cannot be upgraded successfully, record the steps you have taken and the results, and send the information to [Huawei technical support](#).

5 Upgrading the BIOS

About This Chapter

[5.1 Performing the Upgrade](#)

[5.2 Verifying the Upgrade](#)

5.1 Performing the Upgrade

Scenarios

Upgrade the basic input/output system (BIOS) on the **Firmware Upgrade** page of the iBMC GUI.



NOTICE

- Do not power on, power off, reset, or restart the operating system (OS) of the server during the upgrade.
 - If the system does not respond, or the server is powered on and off repeatedly during the upgrade, power off and on the server after the upgrade.
-

Impact on the System

You need to restart the server manually after the upgrade. Services are interrupted by the server restart.

Prerequisites

Conditions

- Services running on the server are stopped.
- You have logged in to the iBMC GUI. For details, see [Logging In to the iBMC GUI](#).
- No minor alarm, major alarm, or critical alarm is generated on the iBMC.

Data

Data preparation is not required for this operation.

Software

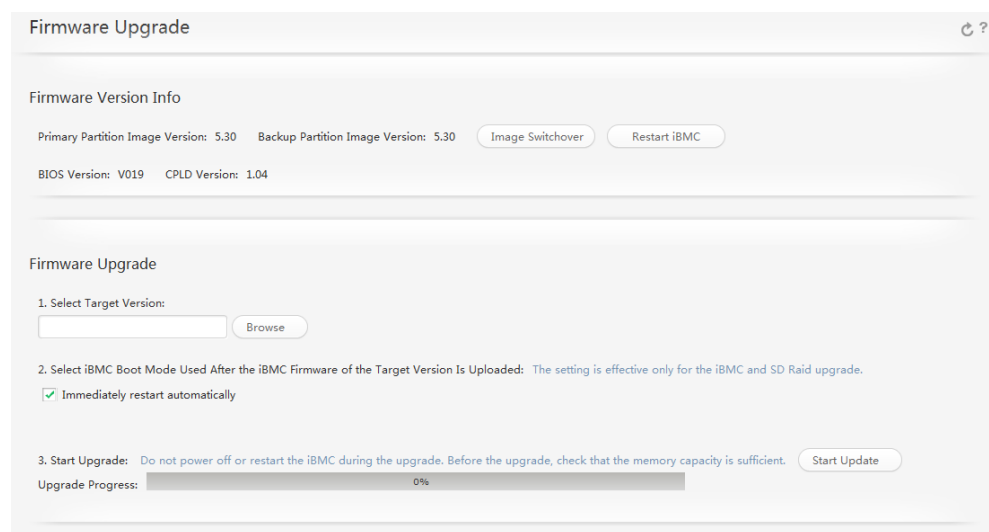
You have obtained **biosimage.hpm**. For details, see [Obtaining the Upgrade Package and Documents](#).

Procedure

Step 1 In the top navigation tree, choose **System**.

Step 2 In the left navigation tree, choose **Firmware Upgrade**, as shown in [Figure 5-1](#).

Figure 5-1 Firmware Upgrade page



Step 3 In the **Firmware Upgrade** area, click **Browse**.

The **Browse** window is displayed.

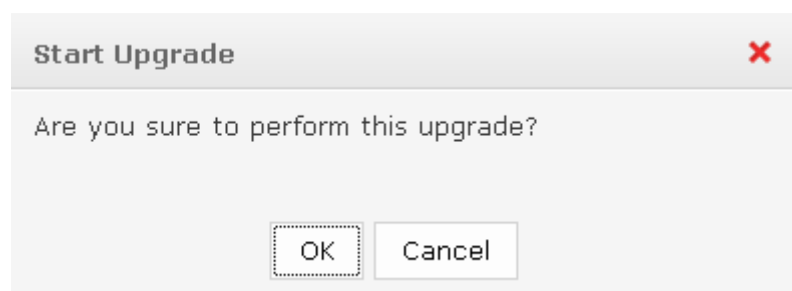
Step 4 Select **biosimage.hpm** from a local folder.

Step 5 Click **Open**.

The upgrade package is selected, and the **Firmware Upgrade** page is displayed.

Step 6 Click **Upgrade**.

The following information is displayed in the dialog box:

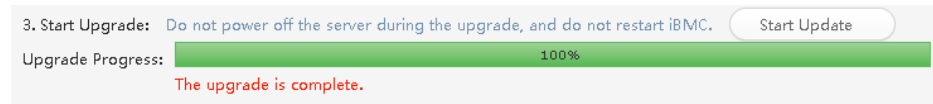


Step 7 Click **OK**.

The iBMC starts preparation for the upgrade. Wait about 2 minutes.

After the preparation is complete, the system starts the upgrade. Upgrading the BIOS takes about 8 minutes.

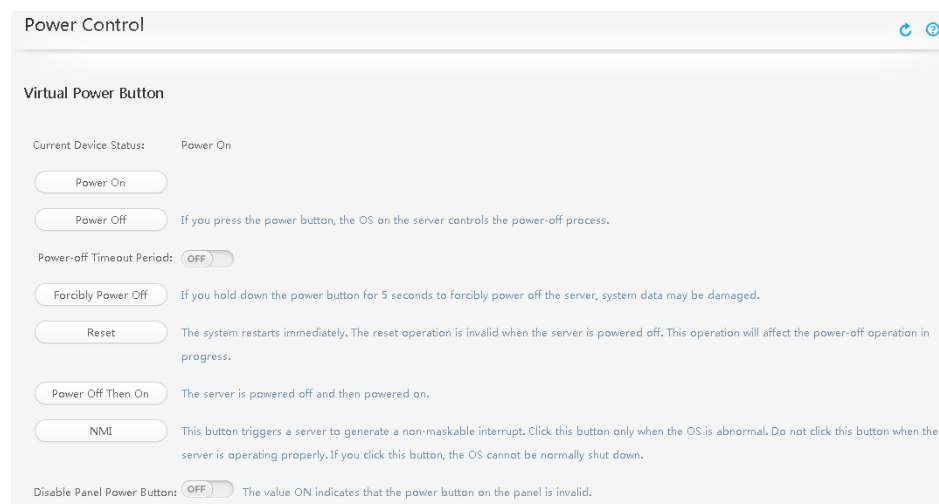
After the upgrade is complete, the following information is displayed on the **Firmware Upgrade** page:



Step 8 In the top navigation tree, choose **Power**.

Step 9 In the left navigation tree, choose **Power Control**, as shown in [Figure 5-2](#).

Figure 5-2 Power Control page



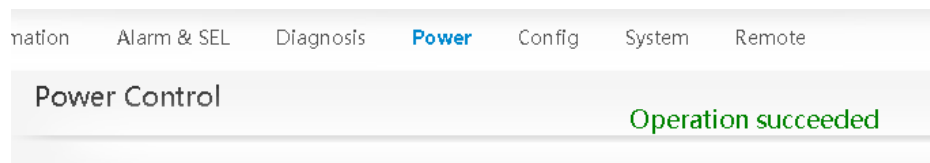
Step 10 Select **Reset**.

The following information is displayed in the dialog box:



Step 11 Click **OK**.

The following information is displayed.

**NOTE**

- You can use the remote virtual console to view the server restart process. In the navigation tree, choose **Remote Control > Remote Virtual Console (shared mode)**.
- If you need to modify the BIOS configuration, press **Delete** during the restart to enter the BIOS.

----End

5.2 Verifying the Upgrade

Verification Checklist

[Table 5-1](#) describes the basic input/output system (BIOS) upgrade verification checklist.

Table 5-1 Verification checklist

No.	Item	Expected Result
1	BIOS operating status	The server BIOS is operating properly.
2	BIOS version	The BIOS is of the target version.

Verification Procedure and Troubleshooting

Procedure

1. Restart the server after the BIOS is successfully upgraded.
2. Verify the BIOS version after the restart.

For details, see [Check Server Software Versions](#).

Troubleshooting

Contact [Huawei technical support](#) if the BIOS does not start after the upgrade.

If the BIOS is not of the target version or a failure message is displayed, upgrade the BIOS again. If the BIOS still cannot be upgraded successfully, record the steps you have taken and the results, and send the information to [Huawei technical support](#).

6 Upgrading the LCD

About This Chapter

[6.1 Performing the Upgrade](#)

[6.2 Verifying the Upgrade](#)

6.1 Performing the Upgrade

Scenarios

Upgrade the liquid crystal display (LCD) on the **Firmware Upgrade** page of the iBMC GUI.

Impact on the System

None

Prerequisites

Conditions

- Services running on the server are stopped.
- You have logged in to the iBMC GUI. For details, see [Logging In to the iBMC GUI](#).
- No minor alarm, major alarm, or critical alarm is generated on the iBMC.

Data

Data preparation is not required for this operation.

Software

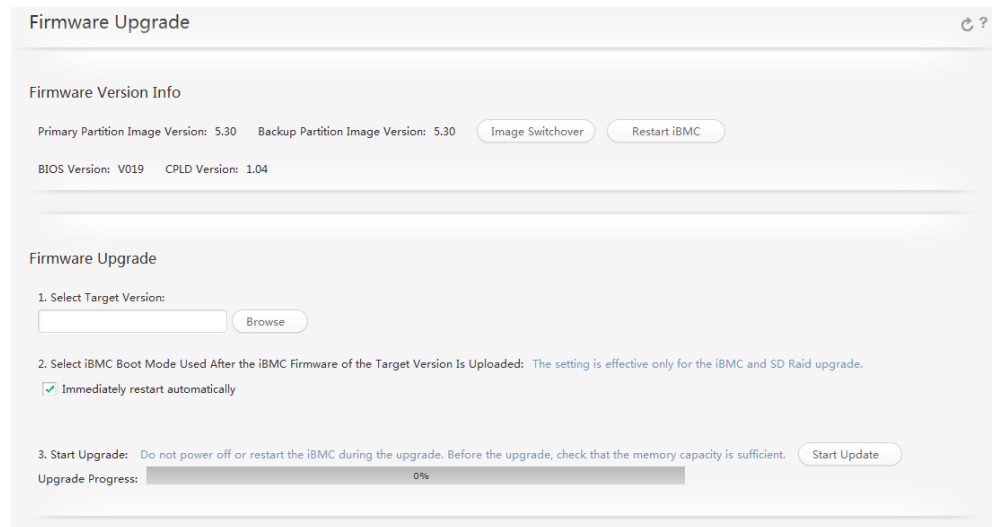
You have obtained **lcdimage.hpm**. For details, see [Obtaining the Upgrade Package and Documents](#).

Procedure

Step 1 In the top navigation tree, choose **System**.

Step 2 In the left navigation tree, choose **Firmware Upgrade**, as shown in [Figure 6-1](#).

Figure 6-1 Firmware Upgrade page



Step 3 In the **Firmware Upgrade** area, click **Browse**.

The **Browse** window is displayed.

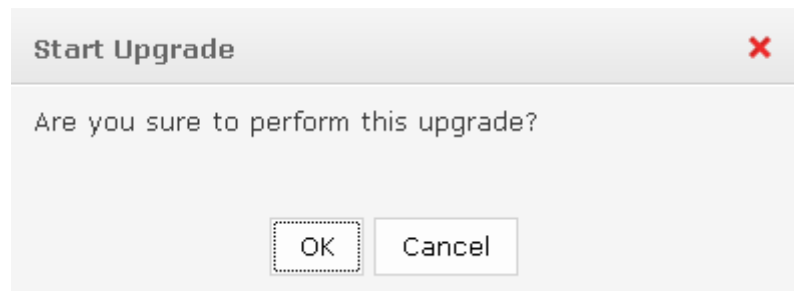
Step 4 Select **lcdimage.hpm** from a local folder.

Step 5 Click **Open**.

The upgrade package is selected, and the **Firmware Upgrade** page is displayed.

Step 6 Click **Upgrade**.

The following information is displayed in the dialog box:

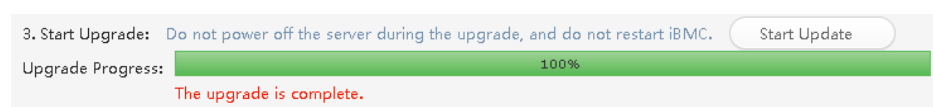


Step 7 Click **OK**.

The iBMC starts preparation for the upgrade. Wait about 2 minutes.

After the preparation is complete, the system starts the upgrade. Upgrading the LCD takes about 8 minutes.

After the upgrade is complete, the following information is displayed on the **Firmware Upgrade** page.





NOTE

The LCD automatically restarts after the upgrade, which has no impact on the server.

----End

6.2 Verifying the Upgrade

Verification Checklist

[Table 6-1](#) describes the liquid crystal display (LCD) upgrade verification checklist.

Table 6-1 Verification checklist

No.	Item	Expected Result
1	LCD operating status	The server LCD is operating properly.
2	LCD version	The LCD is of the target version.

Verification Procedure and Troubleshooting

Procedure

After the upgrade, the LCD automatically restarts for the upgrade to take effect, and the server operates properly during the LCD restart.

Verify the LCD version after it restarts. For details, see [Check Server Software Versions](#).

Troubleshooting

Contact [Huawei technical support](#) if the LCD does not start after the upgrade.

If the LCD is not of the target version or a failure message is displayed, upgrade the LCD again. If the LCD still cannot be upgraded successfully, record the steps you have taken and the results, and send the information to [Huawei technical support](#).

A Appendix

- [A.1 Querying the IP Address of the iBMC Management Network Port](#)
- [A.2 Logging In to the iBMC GUI](#)
- [A.3 Check Server Software Versions](#)
- [A.4 Checking Server Alarms](#)
- [A.5 Technical Support](#)

A.1 Querying the IP Address of the iBMC Management Network Port

Scenarios

Query the IP address of the iBMC management network port in the basic input/output system (BIOS).

The default IP address of the iBMC network port is **192.168.2.100**.

Impact on the System

This operation has no adverse impact on the system.

Prerequisites

Conditions

No special condition is required for this operation.

Data

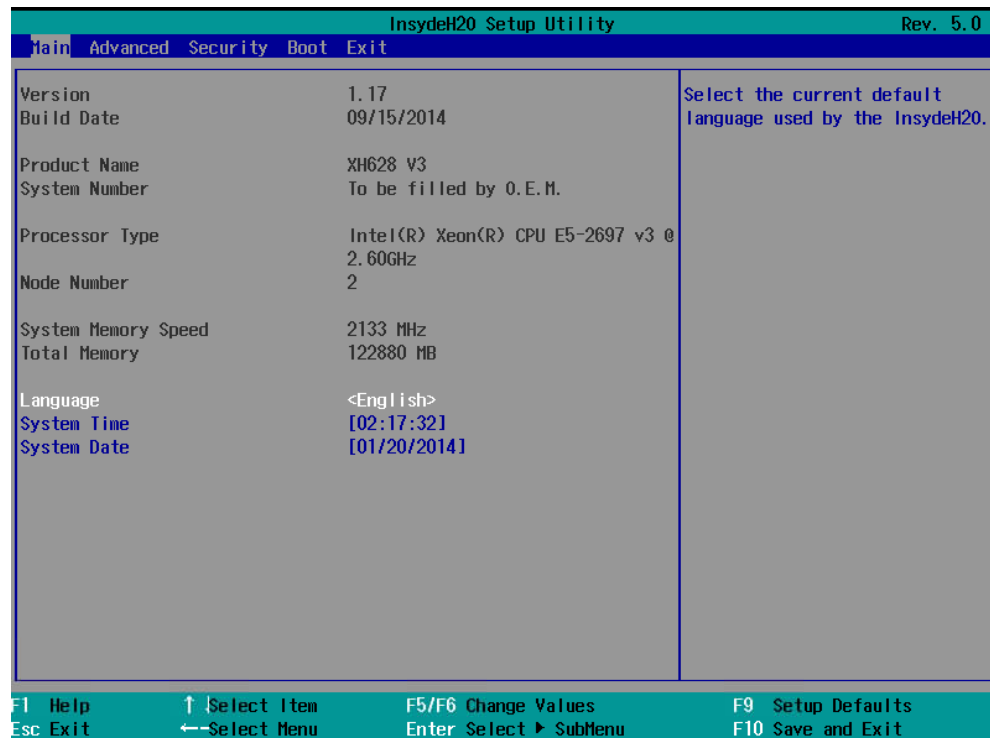
Data preparation is not required for this operation.

Procedure

Step 1 Restart the server, and press **Delete** during the restart.

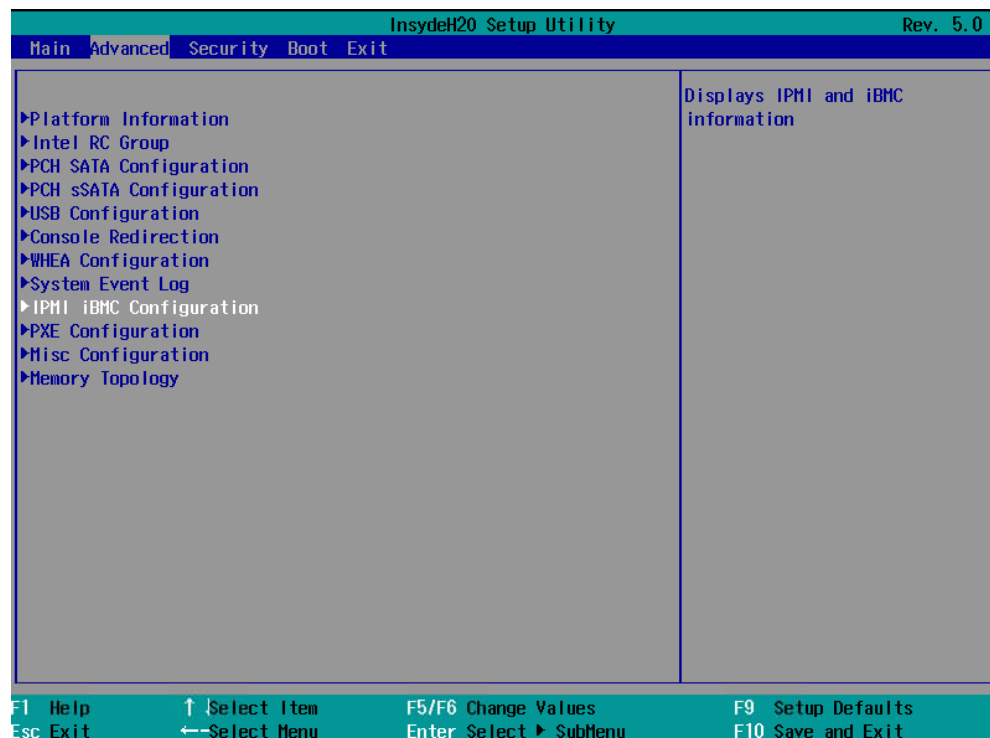
The basic input/output system (BIOS) screen is displayed, as shown in [Figure A-1](#).

Figure A-1 BIOS Main screen



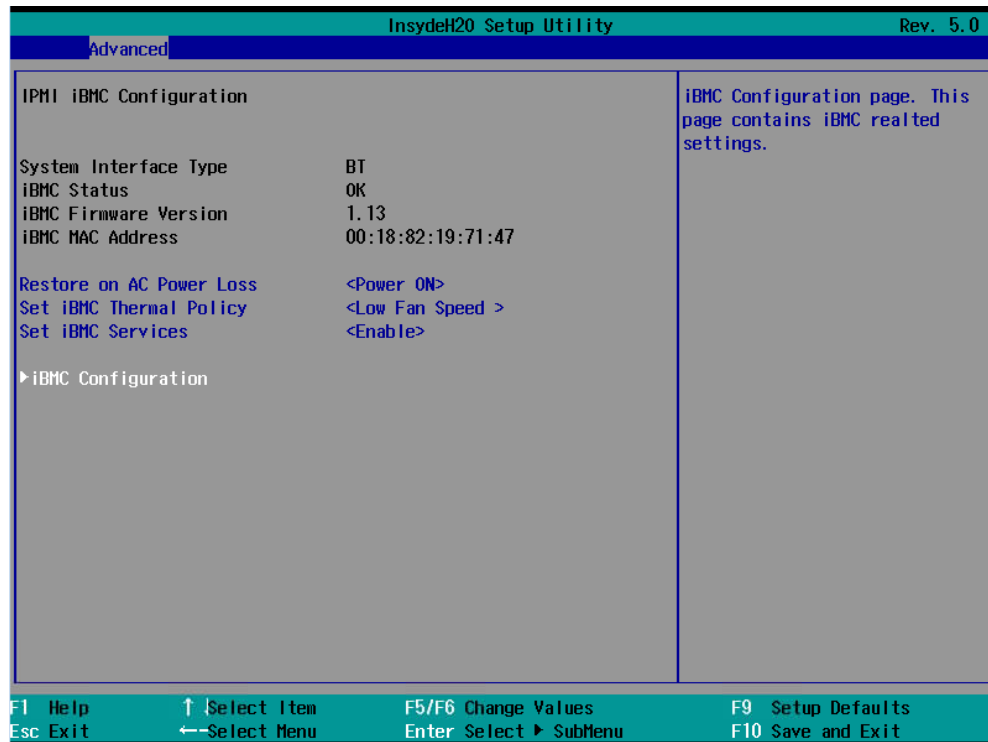
Step 2 Select the **Advanced** screen using arrow keys, as shown in [Figure A-2](#).

Figure A-2 Advanced screen



- Step 3** On the **Advanced** screen, select **IPMI iBMC Configuration** using arrow keys and press **Enter**, as shown in [Figure A-3](#).

Figure A-3 IPMI iBMC Configuration screen



- Step 4** On the **IPMI iBMC Configuration** screen, select **iBMC Configuration** using arrow keys and press **Enter**, as shown in [Figure A-4](#).

Figure A-4 iBMC Configuration screen

InsydeH20 Setup Utility		Rev. 5.0
Advanced		
iBMC Configuration		Name should be 1-16 letter/ number/special, but no space, '.' and ','; and first letter can't be '#'
iBMC User Name	root	
Reset iBMC User Password		
iBMC WDT Support For POST	<Disabled>	
iBMC WDT Support For OS	<Disabled>	
iBMC&NCSI Select	<Dedicated>	
Vlan ID	[1]	
IPv4 Configuration		

IP Source	<Static>	
IP Address	10.10.1.150	
Subnet Mask	255.255.0.0	
Gateway Address	10.10.1.100	
IPv6 Configuration		

IP Source	<Static>	
Prefix Length	[0]	
IP Address	0:0:0:0:0:0:0:0	
Gateway Address	0:0:0:0:0:0:0:0	
F1 Help ↑ Select Item F5/F6 Change Values F9 Setup Defaults Esc Exit ← Select Menu Enter Select ► SubMenu F10 Save and Exit		

The server IP address is displayed on this screen.

----End

A.2 Logging In to the iBMC GUI

Scenarios

Log in to the iBMC GUI using the browser on a local PC. The following describes the login procedure using the PC that runs Windows 7 and uses Internet Explorer 8.0 as an example.

Impact on the System

This operation has no adverse impact on the system.

Prerequisites

Conditions

The local PC that uses the remote control function must provide an explorer of the related versions and the Java runtime environment (JRE). System configuration of the local PC is as described in [Table A-1](#).

The local PC must meet the following networking requirements:

- Network connection between the local PC and the iBMC management network port

- IP addresses of the local PC and iBMC management network port on the same network segment

Table A-1 Configuration requirements for the local PC

OS	running environment (JRE)		Version
<ul style="list-style-type: none"> Windows 7 32-bit Windows 7 64-bit 	Browser	Internet Explorer	IE 8.0
		Mozilla Firefox	Mozilla Firefox 9.0/23.0
		Google Chrome	Chrome 13.0/31.0
	Java running environment (JRE)		JRE 1.6.0 U25/1.7.0 U40
<ul style="list-style-type: none"> Windows 8 32-bit Windows 8 64-bit 	Browser	Internet Explorer	IE 10.0/11.0
		Mozilla Firefox	Mozilla Firefox 9.0/23.0
		Google Chrome	Chrome 13.0/31.0
	Java running environment (JRE)		JRE 1.6.0 U25/1.7.0 U40
Windows 2008 R2 64-bit	Browser	Internet Explorer	IE 8.0/10.0/11.0
		Mozilla Firefox	Mozilla Firefox 9.0/23.0
		Google Chrome	Chrome 13.0/31.0
	Java running environment (JRE)		JRE 1.6.0 U25/1.7.0 U40
Windows 2012 64-bit	Browser	Internet Explorer	IE 10.0/11.0
		Mozilla Firefox	Mozilla Firefox 9.0/23.0
		Google Chrome	Chrome 13.0/31.0
	Java running environment (JRE)		JRE 1.6.0 U25/1.7.0 U40
<ul style="list-style-type: none"> Redhat 4.3 64-bit Redhat 6.0 64-bit 	Browser	Mozilla Firefox	Mozilla Firefox 9.0/23.0
	Java running environment (JRE)		JRE 1.6.0 U25/1.7.0 U40
MAC X v10.7	Browser	Safari	Safari 5.1
		Mozilla Firefox	Mozilla Firefox 9.0/23.0
	Java running environment (JRE)		JRE 1.6.0 U25/1.7.0 U40



NOTE

You can login <http://www.oracle.com/technetwork/java/javase/downloads/index.html> to download Java software.

Data

You have obtained data as described in [Table A-2](#) before performing this task.

Table A-2 Required data

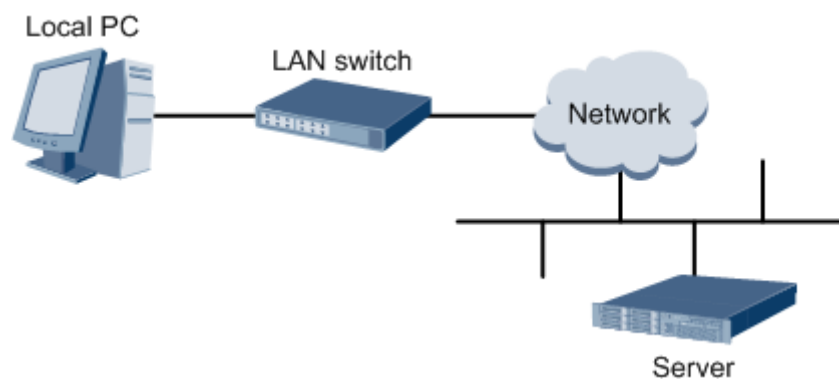
Category	Parameter	Description	Example
User login information	User name	Users that log in to the iBMC GUI	root
	Password	Password of a login user account NOTE The iBMC has a default user root . User root belongs to the administrator group. The default password is Huawei12#\$.	Huawei12#\$

Procedure

- Step 1** Use a network cable (crossover cable or twisted pair cable) to connect the local PC and the iBMC management network port of the server.

Figure A-5 shows the networking.

Figure A-5 Networking diagram



- Step 2** Open the Internet Explorer on the local PC.
- Step 3** In the address bar, enter the iBMC IP address in the format of **https://IP address of the iBMC management network port of the server**, such as **https://192.168.2.100**, and press **Enter**.



NOTE

For details about the IP address of the iBMC management network port, see [Querying the IP Address of the iBMC Management Network Port](#).

- Step 4** Press **Enter**.

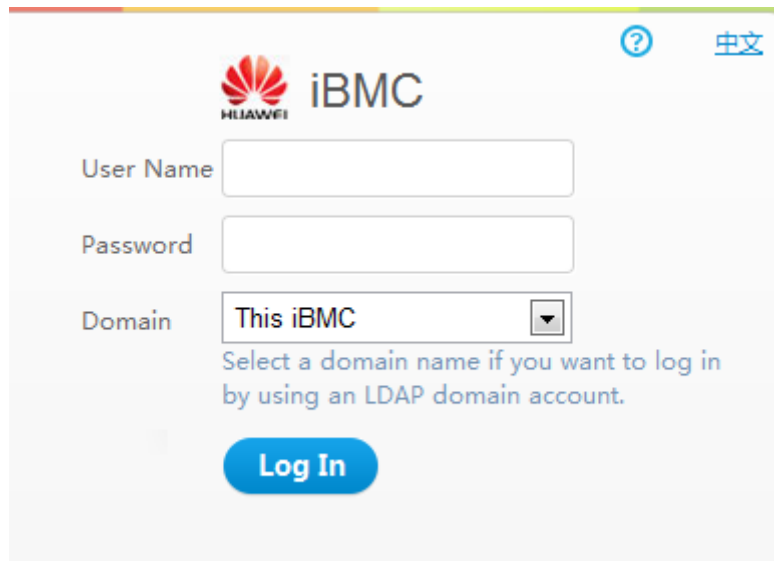
The iBMC login page is displayed in the Internet Explorer, as shown in [Figure A-6](#).



NOTE

- If the Internet Explorer displays **Certificate Error**, click **Continue to this website(not recommended)**.
- If the **Security Alert** dialog box is displayed, click **OK**.

Figure A-6 iBMC login page



Step 5 On the iBMC login page, enter the login user name and password.



NOTE

If you fail to log in with incorrect passwords for five consecutive times, the system will lock the login account. Log in again 5 minutes later.

Step 6 In the **Domain** drop-down list box, choose **This iBMC**.

Step 7 Click **Log In**.

The **Information Summary** page is displayed. The login user name is displayed at the upper right corner on the page.

----End

A.3 Check Server Software Versions

Scenarios

Check software versions of the iBMC and BIOS.

Impact on the System

This operation has no adverse impact on the system.

Prerequisites

Conditions

You have logged in to the iBMC GUI. For details, see [Logging In to the iBMC GUI](#).

Data

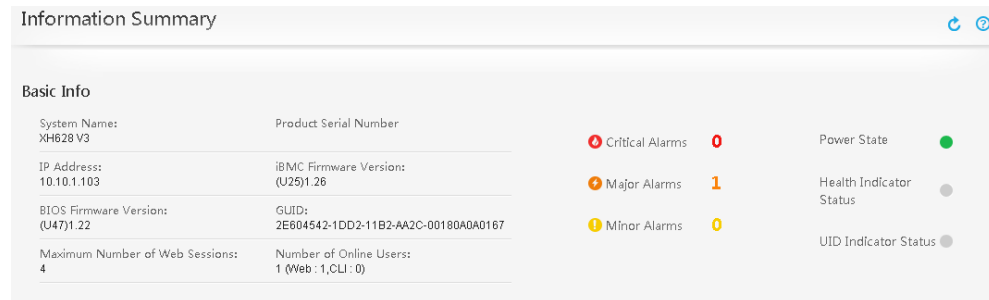
Data preparation is not required for this operation.

Procedure

Step 1 In the top navigation tree, choose **Information**.

Step 2 In the left navigation tree, choose **Information Summary**, as shown in [Figure A-7](#).

Figure A-7 Information Summary page, take XH628 V3 as example



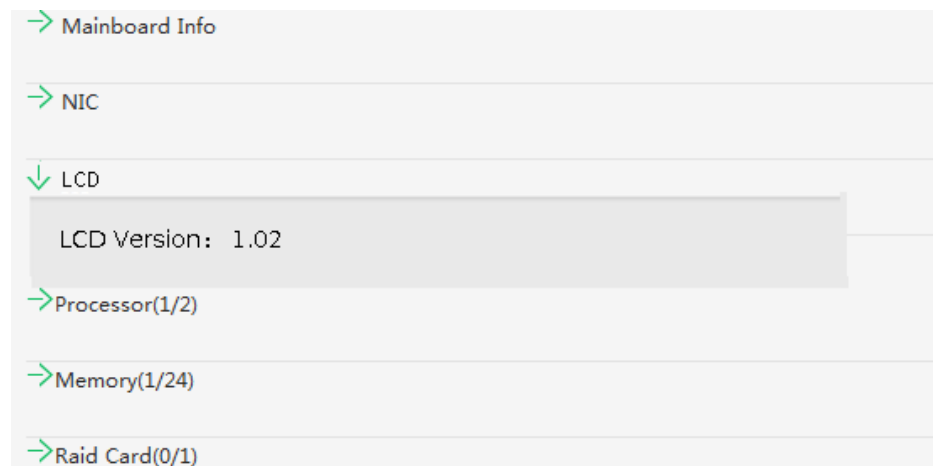
NOTE

In the **Basic Info** area:

- **iBMC Firmware Version** is the iBMC version.
- **BIOS Firmware Version** is the BIOS version.

Step 3 In the left navigation tree, choose **Component Info**, as shown in [Figure A-8](#).

Figure A-8



NOTE

When the LCD is installed, the **LCD** is displayed in **Component Info**. You can obtain the version.

Step 4 View and record the current iBMC, BIOS, and LCD versions.

Step 5 Compare the versions recorded in [Step 4](#) and those in [Obtaining the Upgrade Package and Documents](#).

- If the versions recorded in [Step 4](#) are the same as those in [Obtaining the Upgrade Package and Documents](#), the current iBMC, BIOS, and LCD versions are the target versions. Upgrades are not required.

- If the versions recorded in [Step 4](#) are earlier than those in [Obtaining the Upgrade Package and Documents](#), perform the following upgrade procedure.

----End

A.4 Checking Server Alarms

Scenarios

Check alarms generated by the server.

Impact on the System

This operation has no adverse impact on the system.

Prerequisites

Conditions

You have logged in to the iBMC GUI. For details, see [Logging In to the iBMC GUI](#).

Data

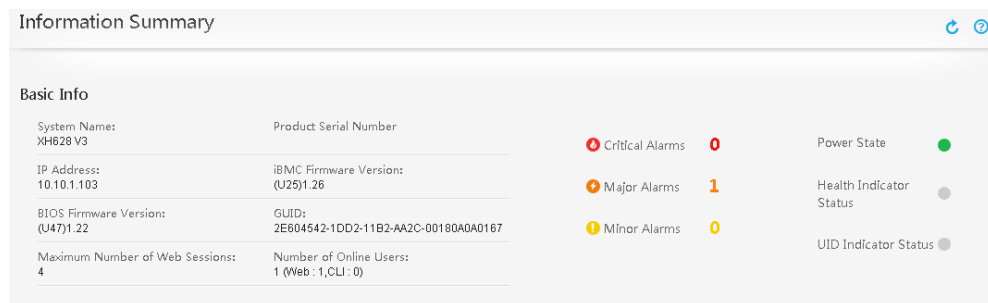
Data preparation is not required for this operation.

Procedure

Step 1 In the top navigation tree, choose **Information**.



Step 2 In the left navigation tree, choose **Information Summary**, as shown in [Figure A-9](#).


Figure A-9 Information Summary page, take XH628 V3 as example



Step 3 In the **Device Health Status** area, check alarms of all severities.

NOTE

-  : indicates a critical alarm. Critical alarms are generated for faults that may power off devices, and even interrupt the system services. Immediate corrective measures are required.
-  : indicates a major alarm. Major alarms are generated for faults that may affect normal running of the system or interrupt services.

- : indicates a minor alarm. Minor alarms are generated for the faults that do not have major impact on the system. Prompt corrective measures are required to prevent more serious faults.

----End

A.5 Technical Support

Huawei provides timely and efficient technical support. Contact the local office or Huawei headquarters for technical support.

Huawei Technologies Co., Ltd.

Address: Huawei Industrial Base, Bantian, Longgang, Shenzhen 518129

Website: <http://enterprise.huawei.com>